
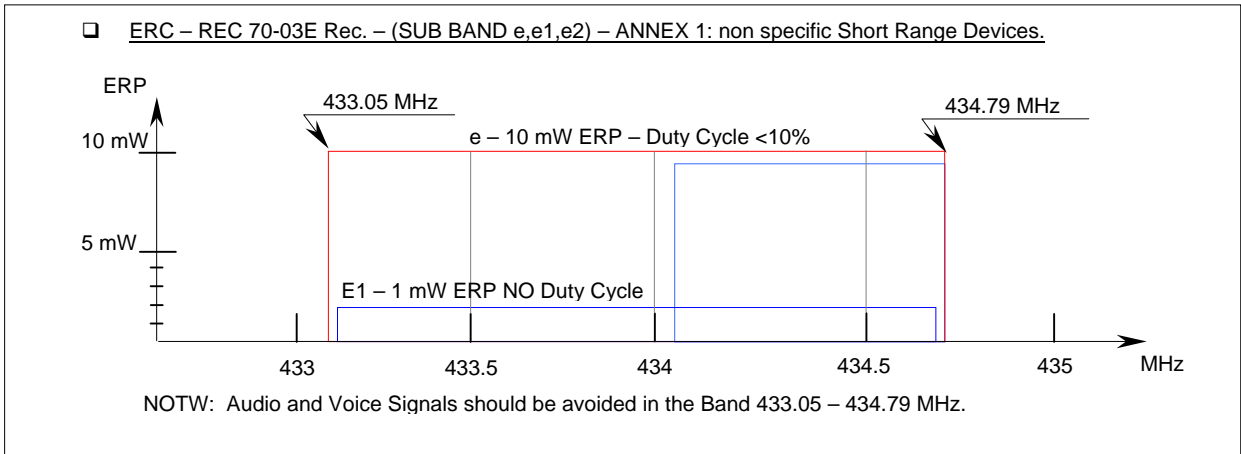


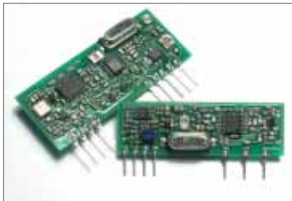
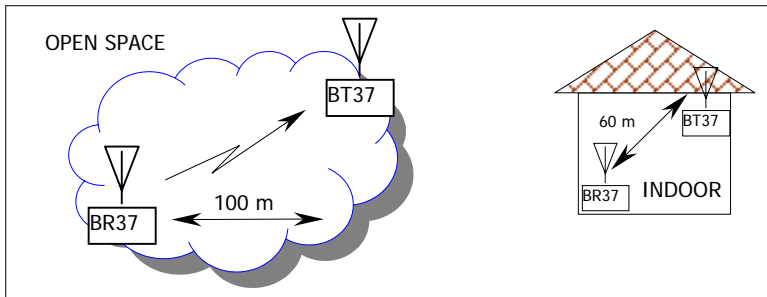
<i>Title:</i>	<input type="checkbox"/> BT37S – BT38S Transmitter units. <input type="checkbox"/> BR37S – BR38S Receiver units.				
<i>Customer:</i>	---	<i>Project:</i>	434-868 MHz SRD BAND	<i>Code:</i>	AN_1.2_Bx3x
<i>Status:</i>	----	<i>Approved:</i>	Guido Moiraghi	<i>Date:</i>	17-10-2003
				<i>Page:</i>	1 di 2

50 KHz Channel Separation Band Plan.

1. 433.05 – 434.79 MHz ISM Band




2. BT37S – BR37S Modules – 50 KHz Radio Channels.



N.	Suf.	Freq. MHz
1	F1	433.075
2	F2	433.125
3	F3	433.175
4	F4	433.225
5	F5	433.275
6	F6	433.325
7	F7	433.375
8	F8	433.425
9	F9	433.475
10	F10	433.525
11	F11	433.575
12	F12	433.625

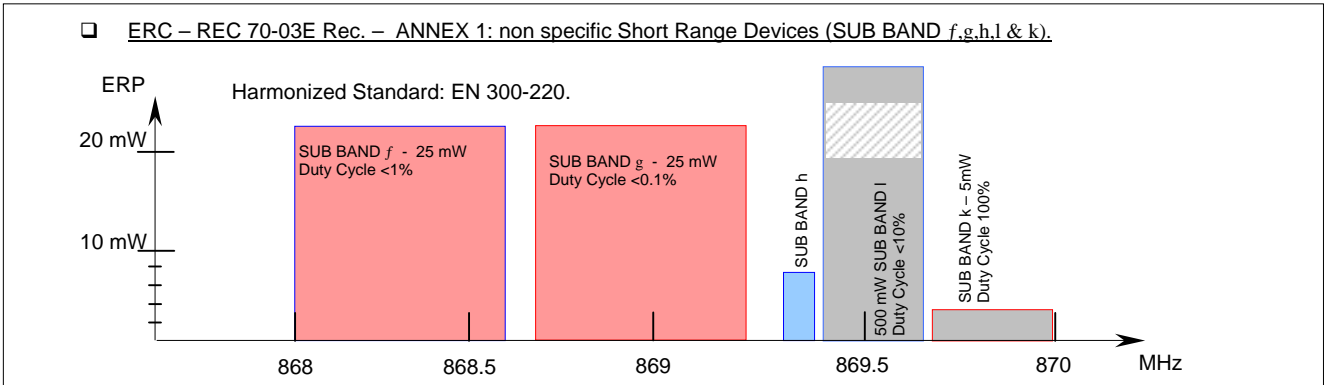
N.	Suf.	Freq. MHz
13	F13	433.675
14	F14	433.725
15	F15	433.775
16	F16	433.825
17	F17	433.875
18	F18	433.925
19	F19	433.975
20	F20	434.025
21	F21	434.075
22	F22	434.125
23	F23	434.175
24	F24	434.225

N.	Suf.	Freq. MHz
25	F25	434.275
26	F26	434.325
27	F27	434.375
28	F28	434.425
29	F29	434.475
30	F30	434.525
31	F31	434.575
32	F32	434.625
33	F33	434.675
34	F34	434.725
35	F35	434.775

<i>Title:</i>	<input type="checkbox"/> BT37S – BT38S Transmitter units. <input type="checkbox"/> BR37S – BR38S Receiver units.				
<i>Customer:</i>	---	<i>Project:</i>	434-868 MHz SRD BAND	<i>Code:</i>	AN_1.2_Bx3x
<i>Status:</i>	----	<i>Approved:</i>	Guido Moiraghi	<i>Date:</i>	17-10-2003
				<i>Page:</i>	2 di 2

3. 868-870 MHz "SRD" Band.

- ERC – REC 70-03E Rec. – ANNEX 1: non specific Short Range Devices (SUB BAND f,g,h,i & k).

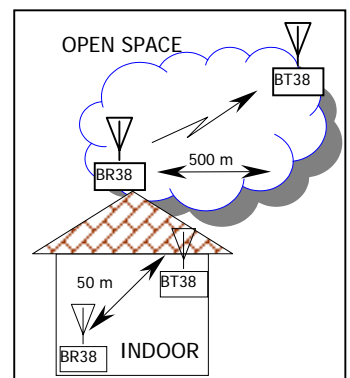


N.	Suf.	Freq. MHz
1	F161	868.025
2	F162	868.075
3	F163	868.125
4	F164	868.175
5	F165	868.225
6	F166	868.275
7	F167	868.325
8	F168	868.375
9	F169	868.425
10	F170	868.475
11	F171	868.525
12	F172	868.575

N.	Suf.	Freq. MHz
13	F173	868.625
14	F174	868.675
15	F175	868.725
16	F176	868.775
17	F177	868.825
18	F178	868.875
19	F179	868.925
20	F180	868.975
21	F181	869.025
22	F182	869.075
23	F183	869.125
24	F184	869.175

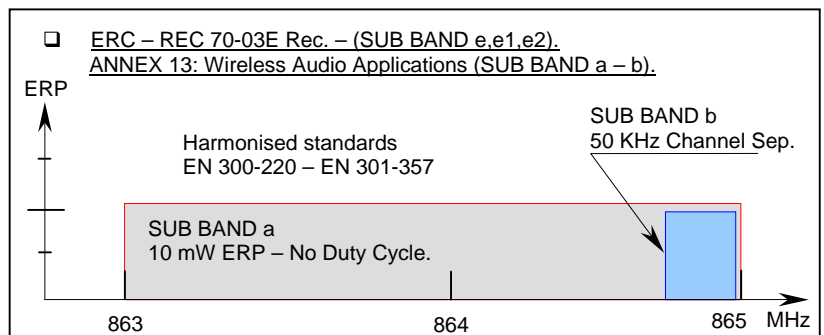
N.	Suf.	Freq. MHz
25	F185	869.225
26	F186	869.275
27	F187	869.325
28	F188	869.375
29	F189	869.425
30	F190	869.475
31	F191	869.525
32	F192	869.575
33	F193	869.625
34	F194	869.675
35	F195	869.725
36	F196	869.775

N.	Suf.	Freq. MHz
37	F197	869.825
38	F198	869.875
39	F199	869.925
40	F200	869.975



4. 863 – 865 MHz "SRD" BAND.

- BT38S Voice Transmitter.
 BR38V Voice Receiver.



N.	Suf.	Freq. MHz
1	F61	863.025
2	F62	863.075
3	F63	863.125
4	F64	863.175
5	F65	863.225
6	F66	863.275
7	F67	863.325
8	F68	863.375
9	F69	863.425
10	F70	863.475

N.	Suf.	Freq. MHz
11	F71	863.525
12	F72	863.575
13	F73	863.625
14	F74	863.675
15	F75	863.725
16	F76	863.775
17	F77	863.825
18	F78	863.875
19	F79	863.925
20	F80	863.975

N.	Suf.	Freq. MHz
21	F81	864.025
22	F82	864.075
23	F83	864.125
24	F84	864.175
25	F85	864.225
26	F86	864.275
27	F87	864.325
28	F88	864.375
29	F89	864.425
30	F90	864.475

N.	Suf.	Freq. MHz
31	F91	864.525
32	F92	864.575
33	F93	864.625
34	F94	864.675
35	F95	864.725
36	F96	864.775
37	F97	864.825
38	F98	864.875
39	F99	864.925
40	F100	864.975